

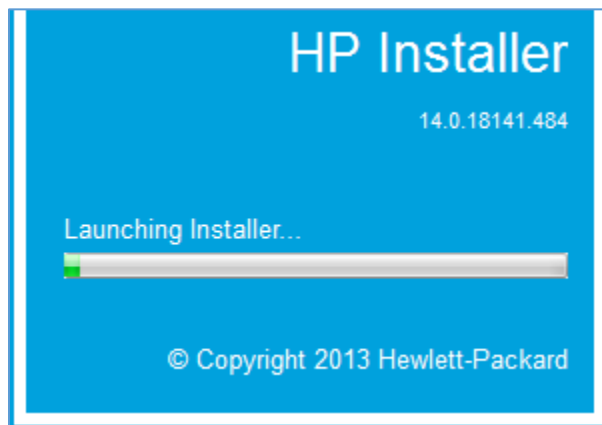
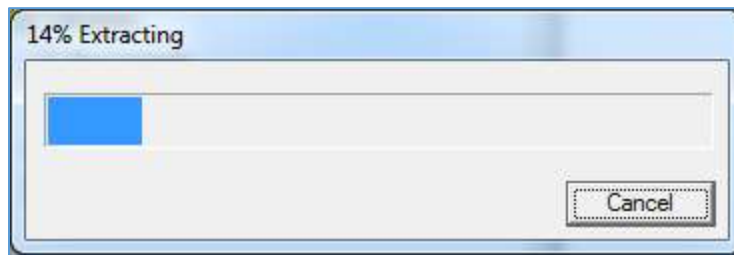
# Installing IRI Summit 2019 (Denver) Printers

Before starting, make sure you are connected to the Summit Wi-Fi network, save all your work and exit all running applications except the application used to view this document. The driver installers take a long time to complete and having other applications running alongside them will slow it down

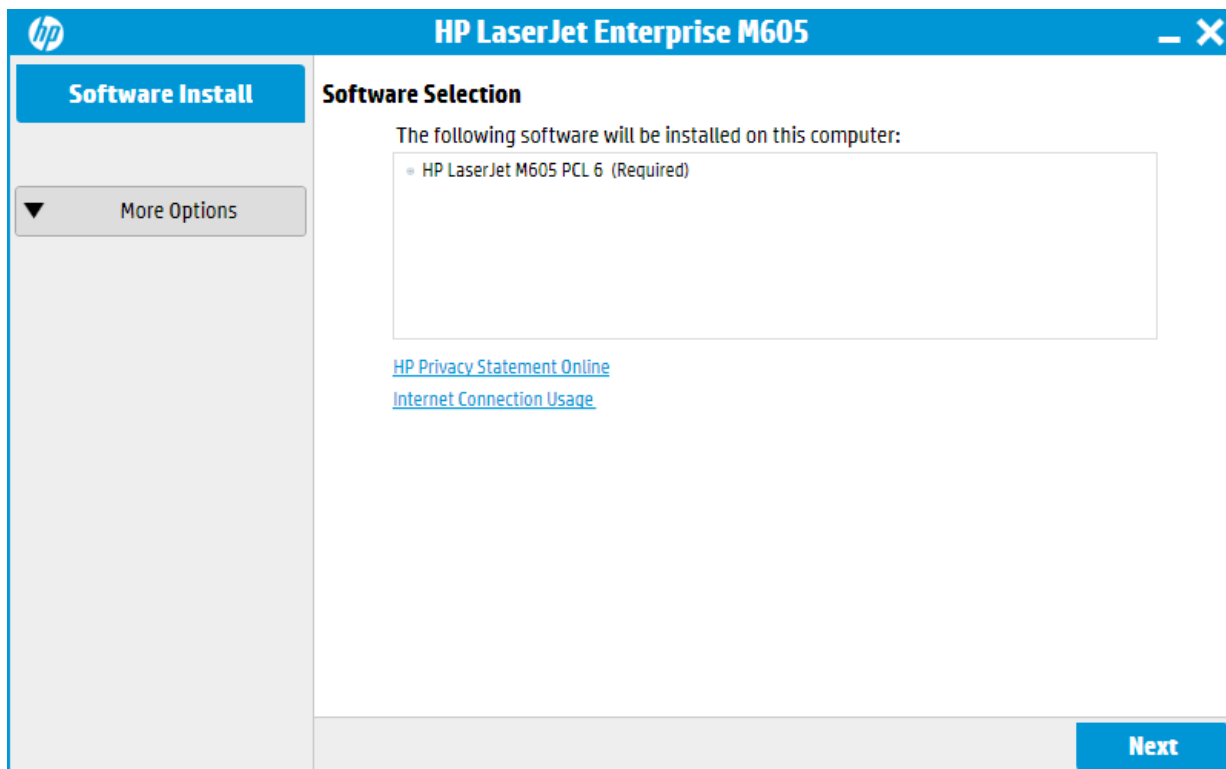
- 1) Download printer driver file you wish to install from <https://www.iriworldwide.com/summitprinters>
  - a. HP M605 B&W  
This is located in the IRI Office (Spruce 1/2). This is to be used by IRI employees attending Summit
  - b. HP LJ 4250 B&W  
This is located in the Staff Office (Spruce 3/4). This is to be used only by Summit Staff members
  - c. HP M553DN Color  
This is located in the Staff Office (Spruce 3/4). This is to be used only by Summit Staff members
- 2) Open the folder you downloaded the file to, right-click on it and select "Run as administrator"
- 3) Proceed with the setup process for the printer you selected
  - a. HP M605 B&W – Click [here](#) for setup process
  - b. HP LJ 4250 B&W – Click [here](#) for setup process
  - c. HP M553DN Color – Click [here](#) for setup process

## HP M605 B&W Staff Printer

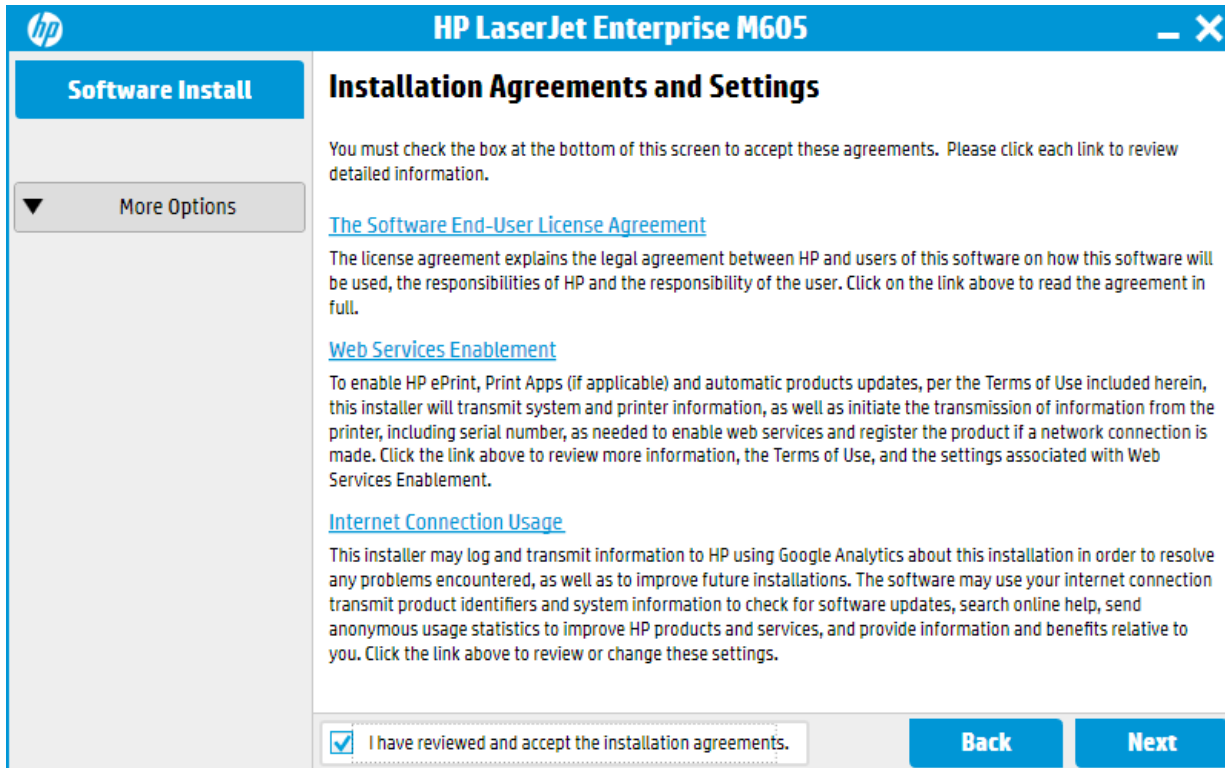
Once you initiate setup it will automatically extract its files and then launch the installer



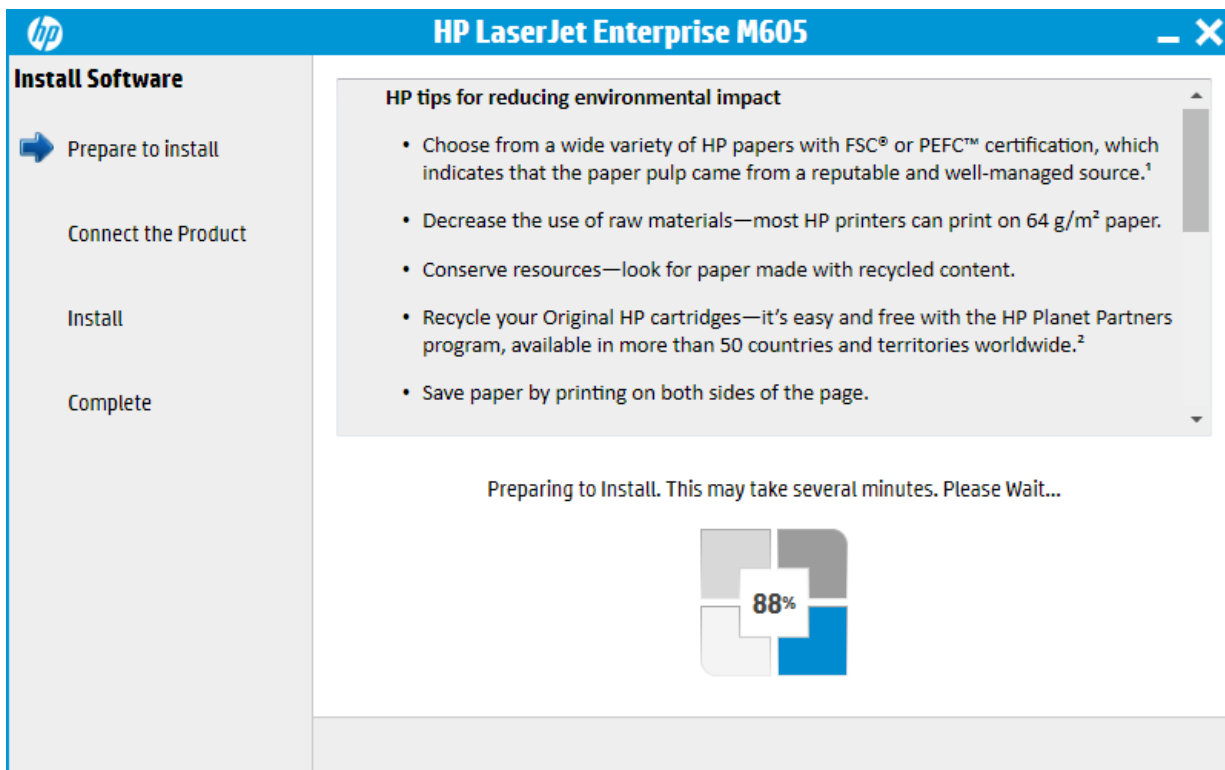
The installer will then open this screen, click **NEXT**



Check the box that says “I have reviewed and accept the installation agreements,” then click **NEXT**



During the driver installation you will see a screen like this, wait for this process to complete and then continue with the setup.

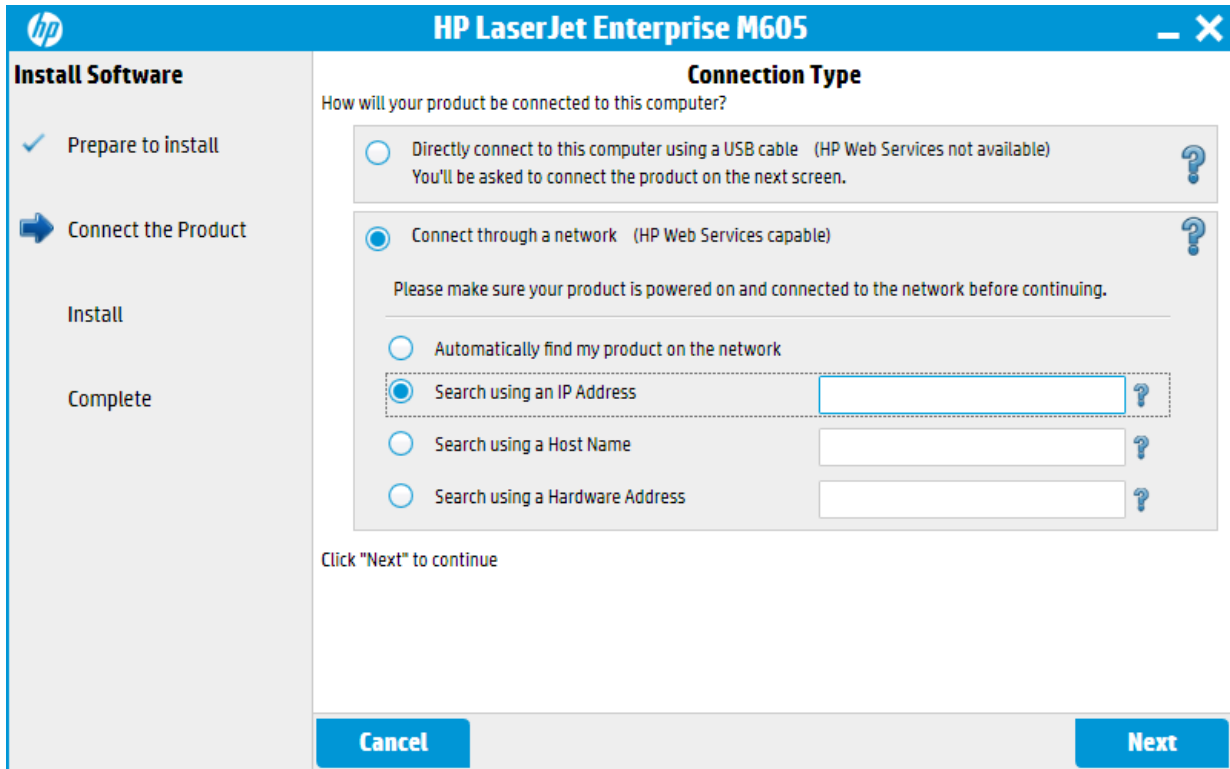


Once the drivers are installed you must now point to the printer's network location. **Select** "Connect through a network", then **select** "Search using an IP Address"

Enter the following IP Address depending on what printer you wish to print to:

HP M605 – IRI Office

**172.21.208.10**



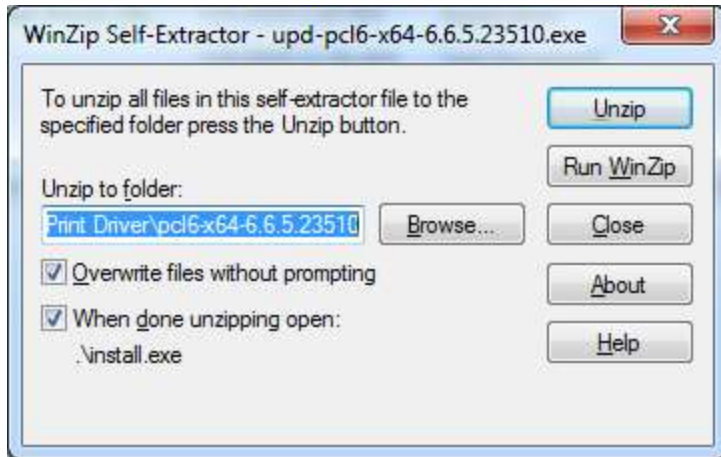
Click **Next** and let the installation complete

OK and confirm your way out of the installer. The Summit printer is now listed in your printers list and you are ready to print.

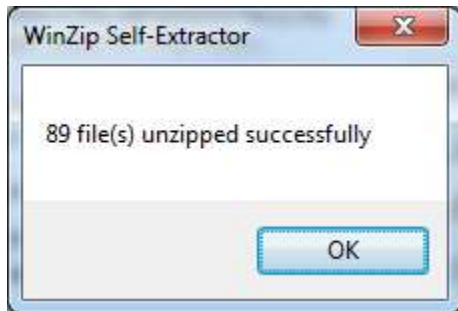
## HP LJ4250 B&W

Once you initiate setup it will automatically extract its files and then launch the installer

A WinZip Self-Extractor window will open. Click the Unzip button to proceed



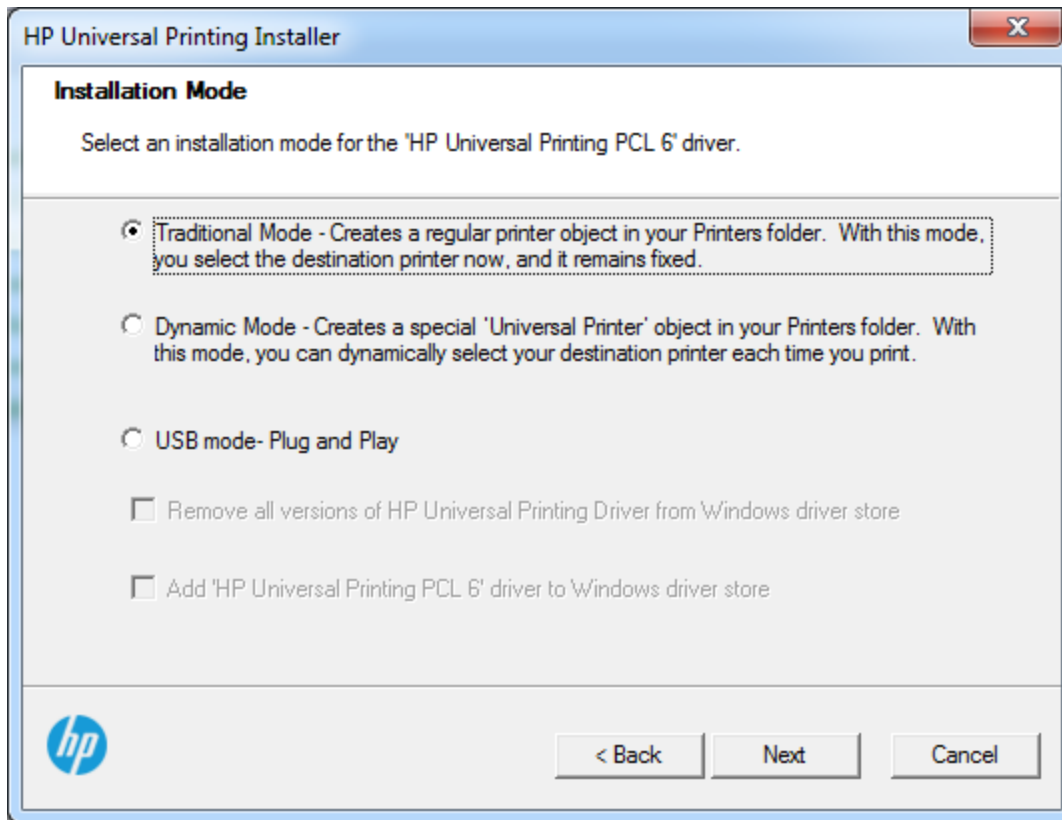
Click OK to on the unzip complete screen



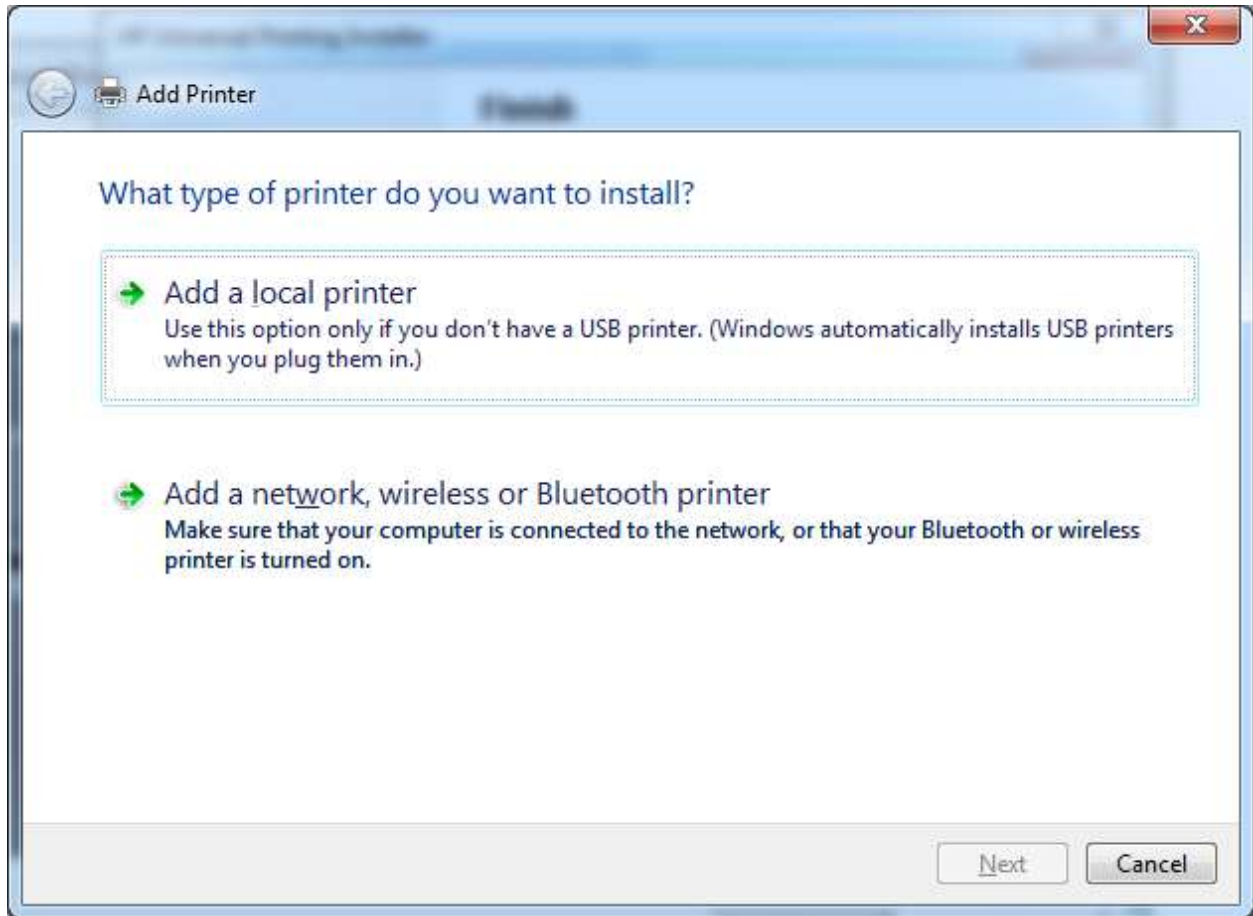
The Setup Wizard will then launch. Click Yes on the End User License screen



On the Installation Mode screen select the "Traditional Mode" option and click Next

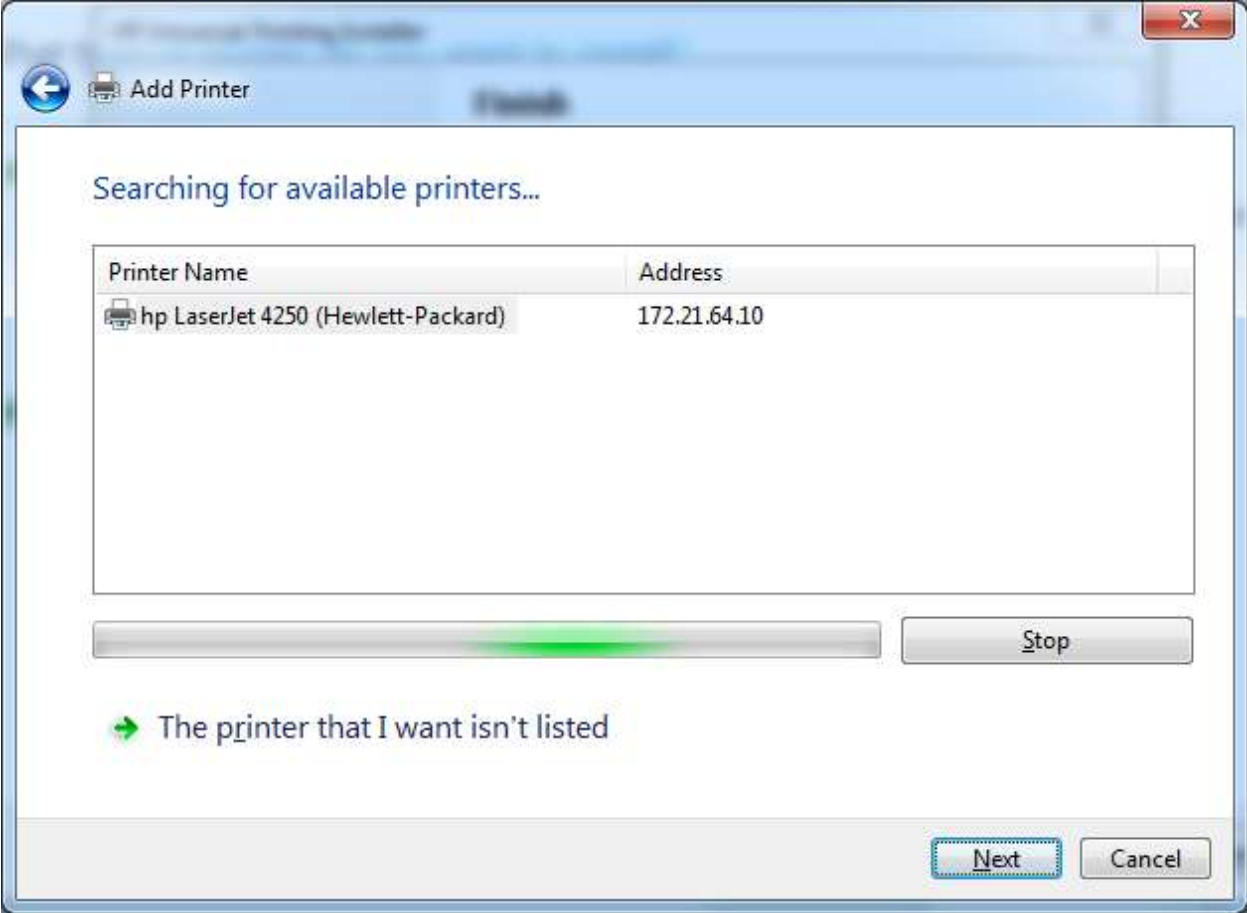


Wait a few seconds and the Windows Printer installation wizard will launch. Select "Add a network, wireless, or Bluetooth printer"

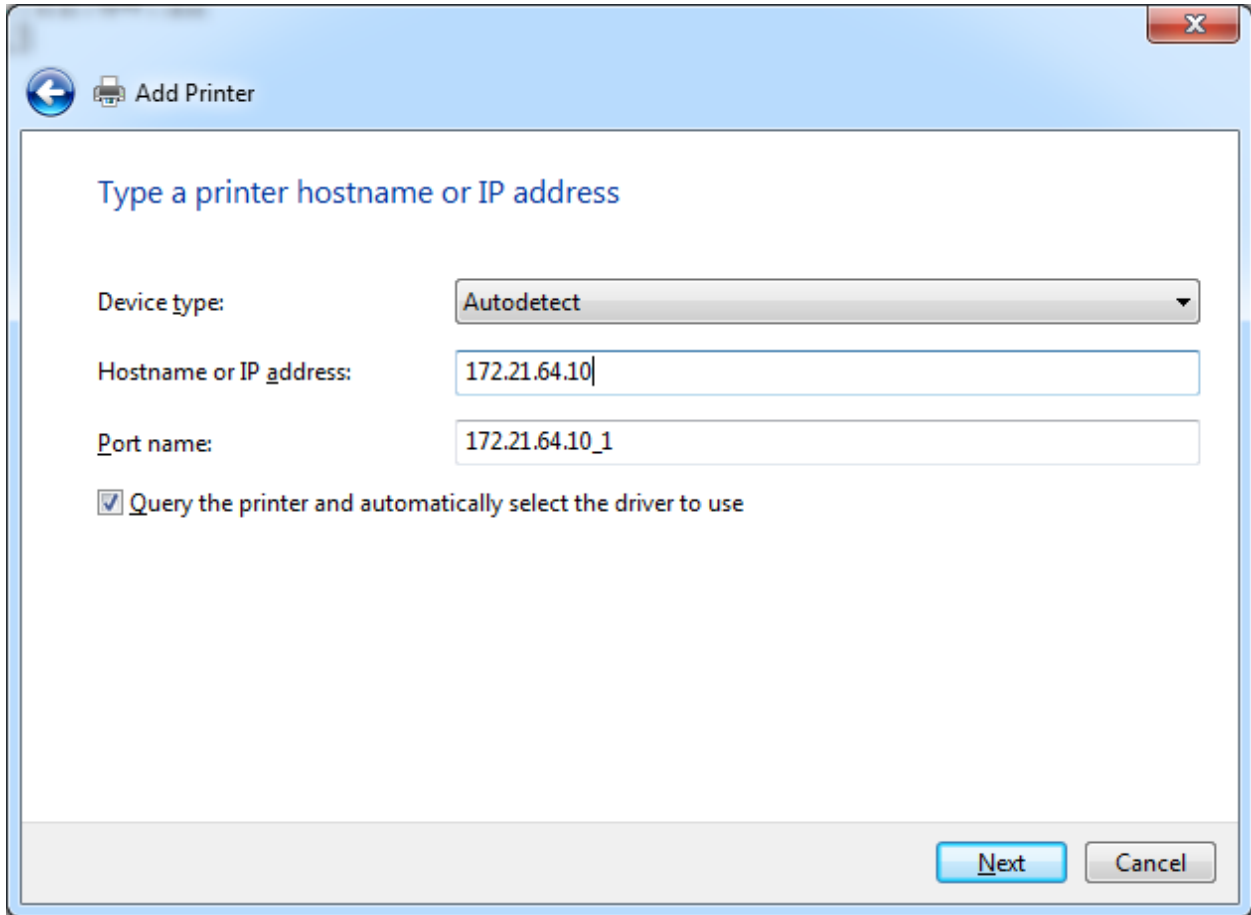


Select, "The printer I want isn't listed" and click Next





Enter the IP Address 172.21.64.10 into the Hostname or IP Address field, let all other fields auto-populate and click NEXT



← Add Printer

Type a printer hostname or IP address

Device type: Autodetect

Hostname or IP address: 172.21.64.10

Port name: 172.21.64.10\_1

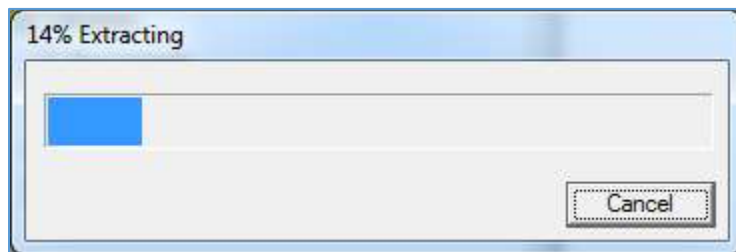
Query the printer and automatically select the driver to use

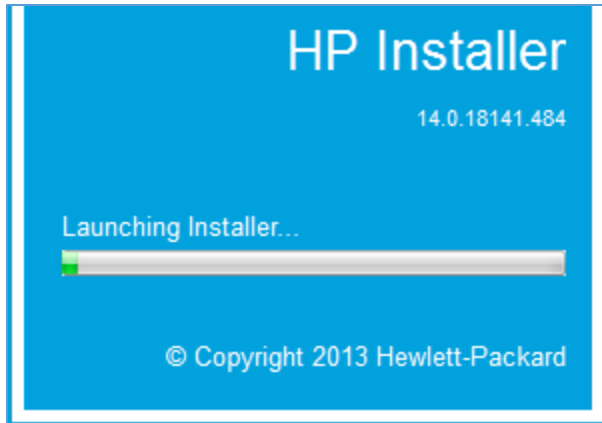
Next Cancel

Let the Wizard automatically complete out its installation, click OK or Finish on any remaining screens. The printer will be installed as HP Universal Printing PCL6

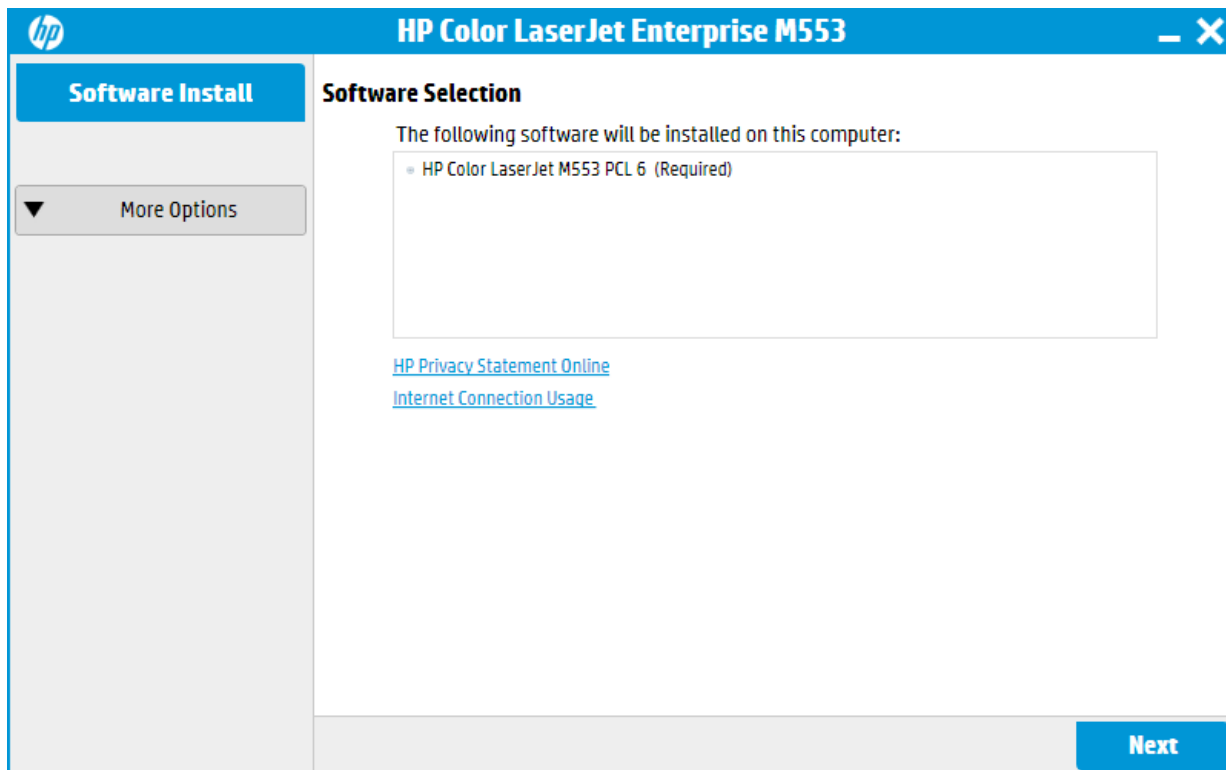
## HP M553DN Color

Once you initiate setup it will automatically extract its files and then launch the installer





The installer will then open this screen, click **NEXT**



Check the box that says “I have reviewed and accept the installation agreements,” then click **NEXT**

The screenshot shows the 'Software Install' window for the HP Color LaserJet Enterprise M553. The window title is 'HP Color LaserJet Enterprise M553'. The main heading is 'Installation Agreements and Settings'. Below the heading, there is a paragraph: 'You must check the box at the bottom of this screen to accept these agreements. Please click each link to review detailed information.' There are three links: 'The Software End-User License Agreement', 'Web Services Enablement', and 'Internet Connection Usage'. Each link is followed by a paragraph of text explaining the agreement or service. At the bottom, there is a checkbox labeled 'I have reviewed and accept the installation agreements.' which is checked. To the right of the checkbox are two buttons: 'Back' and 'Next'.

During the driver installation you will see a screen like this, wait for this process to complete and then continue with the setup.

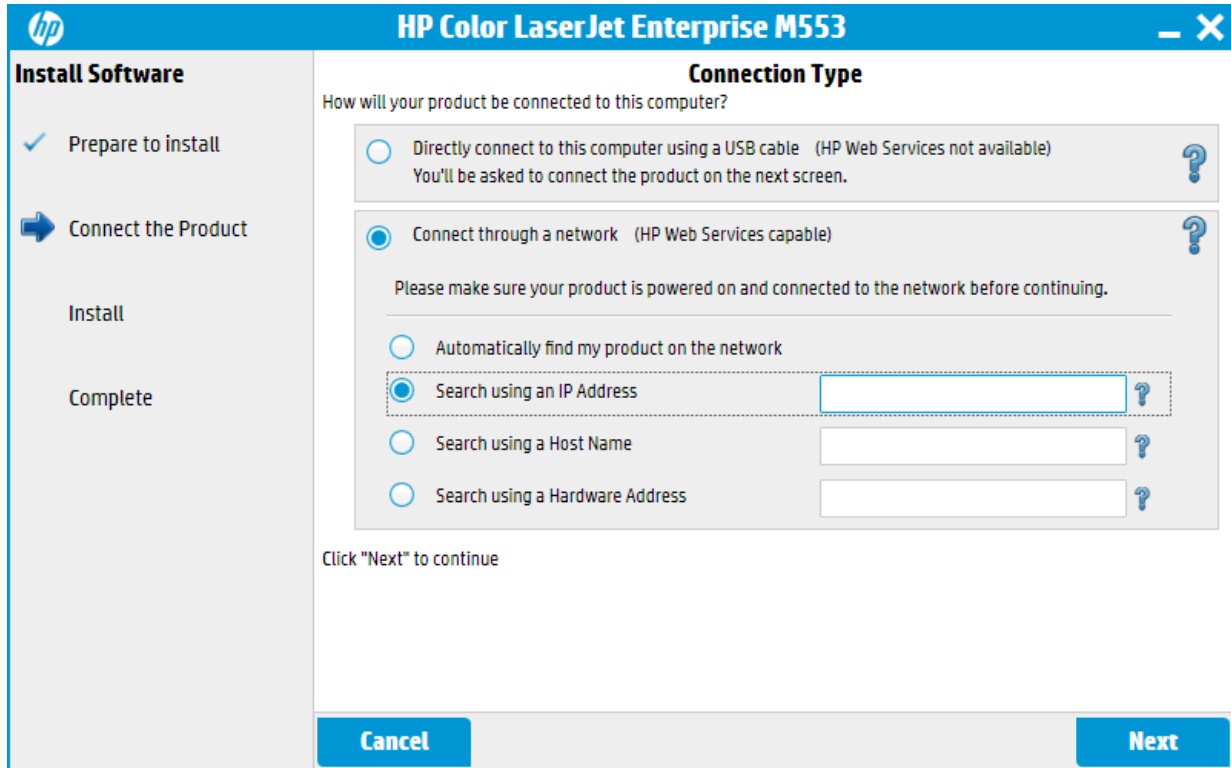
The screenshot shows the 'Install Software' window for the HP Color LaserJet Enterprise M553. The window title is 'HP Color LaserJet Enterprise M553'. The main heading is 'Install Software'. On the left side, there is a vertical list of steps: 'Prepare to install', 'Connect the Product', 'Install', and 'Complete'. The 'Prepare to install' step is highlighted with a blue arrow. The main content area is titled 'HP tips for reducing environmental impact' and contains a list of five bullet points: 'Choose from a wide variety of HP papers with FSC® or PEFC™ certification, which indicates that the paper pulp came from a reputable and well-managed source.', 'Decrease the use of raw materials—most HP printers can print on 64 g/m² paper.', 'Conserve resources—look for paper made with recycled content.', 'Recycle your Original HP cartridges—it's easy and free with the HP Planet Partners program, available in more than 50 countries and territories worldwide.', and 'Save paper by printing on both sides of the page.' Below the list, there is a progress indicator: 'Preparing to Install. This may take several minutes. Please Wait...' and a progress bar showing 77% completion.

Once the drivers are installed you must now point to the printer's network location. **Select** "Connect through a network", then **select** "Search using an IP Address"

Enter the following IP Address:

HP M553DN – Staff Office

**172.21.64.11**



Click **Next** and let the installation complete

OK and confirm your way out of the installer. The Summit printer is now listed in your printers list and you are ready to print.